

**FOR IMMEDIATE RELEASE**

**Professor of Design Curates Paired Exhibits Exploring Fine Art and Design  
Across a Common Theme - Transportation**

in

***TRANS* and *Transportation Design***

**MANIFEST CREATIVE RESEARCH GALLERY  
and DRAWING CENTER**

**November 11 – December 9, 2005**

**OPENING RECEPTION: Friday, November 11, 6-10 p.m.** (refreshments will be served)

**GALLERY HOURS: Tuesday through Friday 2 – 7:00 p.m., Sat. 12 – 5 p.m.** (during exhibit run)

**LOCATION: 2727 Woodburn Avenue, East Walnut Hills, Cincinnati, Ohio 45206**

(Just south of Madison Rd. at DeSales Corner. Map is available at [www.manifestgallery.org/map](http://www.manifestgallery.org/map))

**PARKING: On street and parking across the street in DeSales Business Lot**

**CONTACT: Jason Franz, Manifest Executive Director at [info@manifestgallery.org](mailto:info@manifestgallery.org)**

**CONTACT: Brigid O’Kane, Exhibit curator at [okane@manifestgallery.org](mailto:okane@manifestgallery.org)**

**GALLERY PHONE: 513-861-3638**

**FOR MORE INFO:**

<http://www.manifestgallery.org>

**FULL COLOR EXHIBIT CATALOG AVAILABLE:**

<http://www.manifestgallery.org/manifestpress>

**MANIFEST** presents its first ever exhibit of design and sets the stage for an out of the ordinary gallery experience by pairing *Transportation Design* (in the drawing room) with *TRANS* (in the main gallery). Sponsored in part by Tri-State Visual Products, and a project support grant from the Fine Arts Fund, *TRANS* is a national competitive exhibition of works of Fine Art inspired by systems or objects of transportation. Curated by Manifest co-director and University of Cincinnati professor of Design, Brigid O’Kane, these two exhibits, in part, represent her academic research into the relationship between two often-schismatic disciplines – fine art and design. O’Kane is educated as both an automotive industrial designer (working as car designer at GM in Detroit for ten years) and holds a Masters in Fine Art in drawing.

## **Transportation Design** (drawing room):

Automotive Design is one of the most ubiquitous forms of expression of art and design principles. Cars are everywhere, and we associate our identity with the cars we drive (or wear). They are in fact a fashion statement, a cultural proclamation. But how many people know what really goes into the process of designing a car? How many people are aware that drawing plays a fundamental role in the conceptualization, and realization, of a design plan or how drawing as a means of perception affects a designer's decisions? In an effort to reveal the design process to the general public, Manifest presents this exhibit of works of Transportation Design.

### **What you'll see:**

Works documenting the stages of automotive design, from sketches to scale models by students and professional industrial designers including: Gary Ragle (Mitsubishi), Robin Krieg (General Motors), Ben Davidson (Honda), Kevin Dohn (Puma), and Joseph Palermo (Eleven).

This exhibit offers a *rare and detailed insight* into the working process of car design, an ordinarily highly secretive and obscure creative profession. It also broadens Manifest's fulfillment of its mission to be a Drawing Center by featuring drawings relevant to the design profession.

## **TRANS** (main gallery):

Human civilization is built upon the transformation of resources into modes and devices of transportation. Today cars are everywhere, and even in the most remote places on Earth jets glint in the sunlit sky. The Industrial Revolution has bequeathed humanity a new self-image - one where man is merged with machine. Manifest offers this competitive juried exhibit in an effort to investigate the conceptual and aesthetic issues surrounding mankind's modes of transportation from the fine artist's point of view.

### **What you'll see:**

Thirteen works by twelve artists from Colorado, Florida, Massachusetts, Mississippi, Ohio, Oklahoma, and Texas. Featuring painting, photography, sculpture, etching, lithography, and video by: Jim Ballou, Brandon Barger, Kevin Bell, Matthew Board, Christiane Corcelle-Lippeveld, David Dotson, Jenny Hershey, Jonathan Hils, Kris Hundt, David Kirkwood, E. Brady Robinson, and Brooke White.

Including:

- A short video revealing the dreamlike passage of time and space in distant journeys.
- Abstract painting that hints at being derived from aerial views of city planning systems.
- Seven chrome cars.
- Atmospheric paintings and photographs picturing scenes of (and from) vehicles, and reminiscent etchings of the sculpturesque automobiles of days gone by.

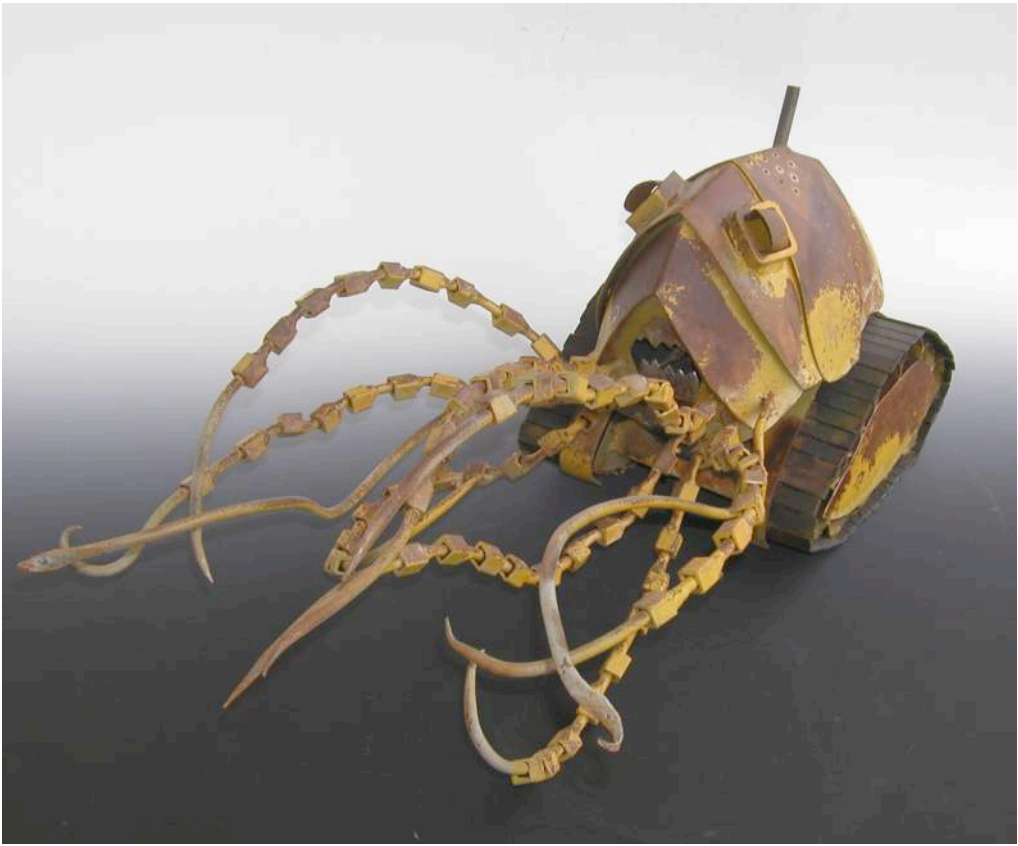
**The combination** of these two simultaneous exhibits at Manifest represents the gallery's commitment to explore the relationship between art and design, and the process of presenting design to the public in a gallery setting.



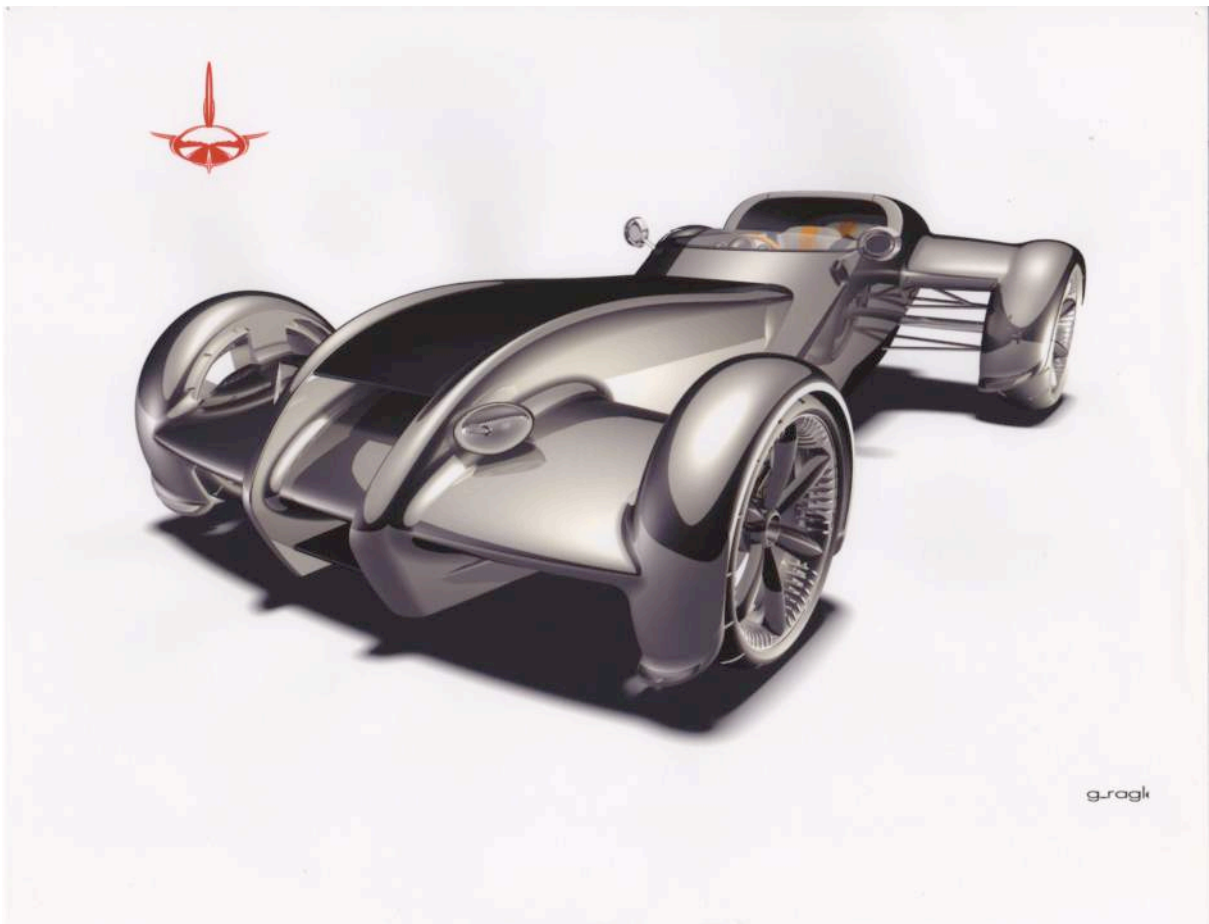
(TRANS) **Spring In Paris** by Christiane Corcelle-Lippeveld,  
solar etching, 8" x 10", 2004



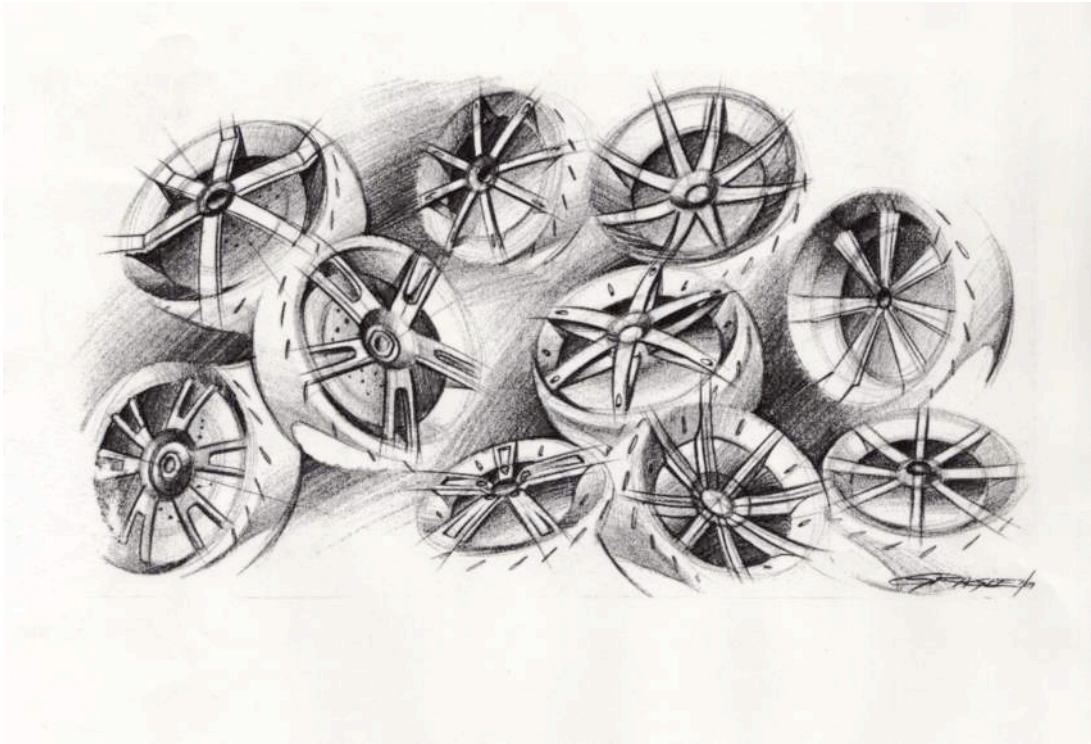
(TRANS) **Dust Devil** by Kevin Bell, oil on canvas, 28" x 25" x 4", 2005



(TRANS) **Squid Dozer** by David Dotson, steel, 11" x 18" x 28", 2004



(Transportation Design) **Alias Rendering** by Gary Ragle



(Transportation Design) **Wheel Studies** by Gary Ragle



(Transportation Design) **Alias Rendering: CUDA** by Robin Krieg

Note: Corresponding hi-res images available.  
For more information send e-mail to: [info@manifestgallery.org](mailto:info@manifestgallery.org)